

DIY KIT

Make Your Own

More information



Scan Here

Resin Keychain

Part A : Resin / Part B : Hardener



1

Mix Part A and B with 2:1 ratio. (Ex. Part A 100g: Part B 50g)



2

Stir thoroughly for 5-10 minutes and add pigment of your choice.



3

Add glitters and gold flakes. (Optional)



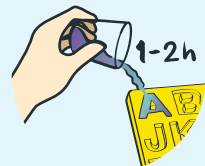
4

Leave for 10 minutes or until bubbles disappear. Working time is 20 minutes.



5

Coat the inner part of your mold with silicone oil to protect resin from sticking to the mold.



6

Pour the mixture into mold and wait for 1-2 hours. Remove bubbles using torch.



7

After 1-2 hours or when resin is slightly hardened, add more glitters and dried flowers on top.



8

Final coat the artwork with resin and remove bubbles.



9

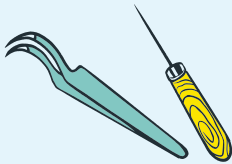
After fully cured in 18-24 hours, demold and you are all set!

KIT INCLUDES



EASY RESIN 300g

Resin Part A 200g
Hardener Part B 100g



Tweezer | Awl



Alphabet Molds



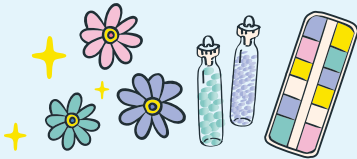
Cups | Popsicle sticks | Gloves



Digital Scale



Silicone Oil



Dried Flowers | Glitters



Pastel Pigment



Acetone

For cleaning utensils,
hands and clothes



Key ring | Plier | Hand drill

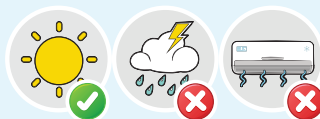
Precaution

1

Ensure your resin cures at room temperature. Work in a well ventilated area. (Best without air conditioner) Otherwise, you will be left with a greasy film from the amines in the hardener.

How to fix :

- > Torch the greasiness out. You will need to torch them out immediately or if the resin has already cured, sand it out and pour the second coat.



Check out how to torch them out!

SCAN HERE

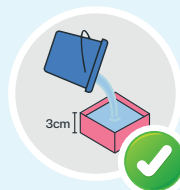


2

It is important to pour in 2-3 cm thickness at once if you pour any thicker, the surface will get heated up and crack. Also, the bubbles will not be able to escape to the surface and you may end up with bubbles in your cured resin.

How to fix :

- > you can do a second coat or multiple coats! Pour your first layer, torch out bubbles, cover and wait 3-4 hours until it reaches a jelly-like stage. Then, you can pour on your next 2-3 cm layer and repeat until you reach the height you desire.



3

With gloves on, pour precisely 2:1 ratio amounts. Inaccurately measurement can cause your resin to not cure properly and turn out to be sticky or runny.

Not sure how much resin you need for a project? Use our calculator

SCAN HERE



FAQs

> How can I fix small imperfections in my resin?

We recommend that you sand down the entire surface (using #80, #100, #120, #150 sandpaper) and pour another perfectly measured, well mixed coat of EASY RESIN over the entire piece for an even, flawless finish.

> Is it possible to overstir?

While it is extremely important to stir the resin and hardener thoroughly for 5-10 min or it may not cure properly, you really can't overstir. Don't worry if you detect bubbles in the resin while stirring, you can torch them out later.

> How do I fix a greasy spot on my resin?

Sometimes when resin is left to cure in humid conditions, the surface can develop a greasy film from the amines in the hardener. The best way to prevent this is to torch them out immediately before the resin cures. If your piece has already cured, sand it out and pour the second coat and make sure your resin cures at room temperature.

> Can I do a second coat or multiple coats?

Yes! If you need to do a second coat to repair a small imperfection such as a bubble, hair, or dust in your cured resin. Sand out the imperfection first, and then give the entire piece an overall sanding to provide tooth so that the fresh layer will properly adhere. Sanding will cause the first layer to look scuffed but when you pour the second coat on, the stuff marks will become invisible for multiple layers, wait 3-4 hours until it reaches a jelly-like stage. Then, you can pour on your next 2-3 cm layer and repeat until you reach the height you desire.

> How long does it take to cure?

Cure time refers to the amount of time it takes for the resin mixture to totally finish its chemical reaction and become its hardest state. The cure time is 24 hours. However, you can touch the surface after about 1-2 hours. EASY RESIN reaches its full cure at 72 hours.

More Information

> What is the shelf life of EASY RESIN?

We recommend using within 12 months once opened or 1 year unopened. Keep out of sunlight to protect it from yellowing and tightly close the container. Keep away from children.

Tightly closed the container and keep away from sunlight. You can keep EASY RESIN for 10-12 months once opened and keep away from children.



Caution

1. **Do not** eat or directly inhale.
2. During the procedure, you should wear gloves and mask properly, and wash your hands every time using acetone and followed by soap.
3. In case of contact with eyes, rinse immediately with plenty of water and seek medical advice.
4. Avoid contact with skin. In case of contact with skin, wash immediately with acetone or rubbing alcohol.
5. In case of swallowing the product, do not vomit and get medical help immediately.

